

Welcome to the December issue of Anastomosis. In this issue, we bring you the latest news from our members and keep you updated on upcoming deadlines. We also highlight some interesting news articles from the past month.

## Deadlines

Mark your diary!

The **Summer meeting of the Society** will take place jointly with the British Association of Clinical Anatomists (BACA) at Brighton and Sussex Medical School from **19-21 July 2016**.

## People

Congratulations to **Professor Tom Gillingwater**, Editor-in-Chief of the Journal of Anatomy, who has been appointed to the prestigious Chair of Anatomy at Edinburgh Medical School.

Congratulations to **Ms. Kim Morrell of the Cortex Club, University of Oxford** who has received Society support award under the Support for Societies programme. The award will support a seminar at the University of Oxford by Professor Jeffrey Lichtman of Harvard University.

Congratulations to **Dr. Susan Chapman of Clemson University** who is the latest winner of the Society Best Image Prize for her entry 'Full frontal face'. Runner-up prize goes to **Stephane Berneau at the University of Manchester** for an entry titled 'In-vitro embryo invasion'. Both images are featured in the current image prize Call for Submissions.

## Awardee Reports

Many thanks to Melissa Andrews (supported by a Symington Award to attend the 45th annual Society for Neuroscience (SFN) Meeting in Chicago, Illinois, USA) for submitting an outcomes report.

## Research

### Early Call: Anatomical Society Studentships

The Society has announced that it will be seeking applications from Society Members for Anatomical Society Studentships 2016/17 round (student start date 1st October 2017) next year. Application Details will be announced in early 2016.

### Journal of Anatomy: getting to the core in undergraduate anatomy

A revision of the core syllabus for regional anatomy in the United Kingdom and Ireland has just been published by Claire Smith and colleagues for the Anatomical Society. The twin publications describe the modified Delphi method used to construct the syllabus for training doctors. You can read more about this project and its outcome in the January issue of Journal of Anatomy at <http://onlinelibrary.wiley.com/doi/10.1111/joa.12402/full>

### Aging Cell: rescue premature aging with methylene blue

The use of methylene blue as a histological dye is familiar to many morphologists but the usefulness of this dye for rescuing mitochondrial defects in premature aging is what interested Zheng-Mei Xiong and colleagues at University of Maryland and Johns Hopkins University School of Medicine in the United States. Their findings are described in "Methylene blue alleviates nuclear and mitochondrial abnormalities in progeria" in the current early view online issue of Aging Cell at <http://onlinelibrary.wiley.com/doi/10.1111/ace.12434/full>

## Calendar

January

S	M	T	W	T	F	S
					1	2
3	4	5	6	7	8	9
10	11	12	13	14	15	16
17	18	19	20	21	22	23
24	25	26	27	28	29	30
31						

## Best Image Prize Deadline May 31, 2016



The next deadline for the Society's Best Image Prize is 31 May 2016. The size limit for submitted images is 1.0MB.

## January Table of Contents Journal of Anatomy



The electronic table of contents of the January issue of the Journal of Anatomy is available in this issue of the newsletter.

## Royal Society Grants

**Dorothy Hodgkin Fellowship** outstanding scientists in the UK at an early stage of their research career who require a flexible working pattern due to personal circumstances such as parenting or caring responsibilities or health issues Closes 12 January 2016.

## Graduate Center

### Support for Student Societies

The Society provides up to 6 competitive awards to support Student Surgical Societies and Other Student Societies. Applications for maximum funding of £200 are considered on a rolling basis (1 October to 30 September). More details at [www.anatsoc.org.uk](http://www.anatsoc.org.uk)

## Opportunities

### Job Vacancies

The **University of Nottingham** Medical Science & Graduate Entry Medicine programme is inviting applications for the position of **Assistant Professor in Anatomy** based at the Royal Derby Hospital Centre. This is a teaching-focused position to contribute to the organisation and delivery of anatomy teaching in undergraduate courses. Closing date: **6 January 2016**.

Applications are invited for a **Teaching Associate/Teaching Fellow/Senior Teaching Fellow** in the **University of Bristol** - Centre for Comparative and Clinical Anatomy. Candidates are expected to have experience of current and innovative teaching methods and/or pedagogical research, and the ability to teach clinically-relevant topics in professional (Medical, Veterinary, Dentistry) programmes. Closing date: **6 January 2016**.

Applications are invited for a **Lecturer in Anatomy/Neuroanatomy** at the **University of Liverpool** to contribute to the teaching of the School of Life Sciences together with associated administrative duties at undergraduate and postgraduate levels. Candidates are expected to have experience in organising, lecturing, managing and delivering practical classes, projects and small group tutorials in the anatomical sciences, particularly human neuroanatomy. Closing date: **8 January 2016**.

**Queen Mary University of London** - Institute of Health Sciences Education is seeking to appoint a **Lecturer/Senior Lecturer in Anatomy** within the School of Medicine and Dentistry. The post is a Teaching and Scholarship post in a high quality, integrated anatomy course. Closing date: **10 January 2016**.

**Brian Mercer Feasibility Award** for scientists who wish to commercialise an aspect of their research. No deadline.

**Cancer Research UK's Grand Challenge** will be launched October 12, an innovative, £20 million international funding scheme which looks to accelerate progress using a collaborative, interdisciplinary and multi-national approach. Applications are welcome from teams in any discipline and any country that are ready to tackle one of the toughest questions in cancer today. Call closes: 28 February 2016. More information on the CRUK website.



Items should reach the editors a minimum of 30 days before the date that the event is scheduled to take place.



If you have any news, events or announcements that you would like to see published in the newsletter, send us an email

# Journal of Anatomy

Volume 228, Issue 1, Pages 1–214, January 2016

## Editorial

- 1 Editorial  
C. Lee

## Education Articles

- 2 Anatomical Society core regional anatomy syllabus for undergraduate medicine: the Delphi process  
*C.F. Smith, G.M. Finn, J. Stewart and S. McHanwell*
- 15 The Anatomical Society core regional anatomy syllabus for undergraduate medicine  
*C.F. Smith, G.M. Finn, J. Stewart, M.A. Atkinson, D.C. Davies, R. Dyball, J. Morris, C. Ockleford, I. Parkin, S. Standing, S. Whiten, J. Wilton and S. McHanwell*

## Education Correspondence

- 24 Anatomy from the outside in: a new on-line surface anatomy guide  
*V.B. Morris, D. Corrigan, U. Sealy, A. Kokaram, M. O'Dea and T.C. Lee*

## Original Articles

- 26 Innervation of the rabbit cardiac ventricles  
*N. Pauziene, P. Alaburda, K. Rysevaite-Kyguoliene, A.G. Pauza, H. Inokaitis, A. Masaityte, G. Rudokaite, I. Saburkina, J. Plisiene and D.H. Pauza*
- 47 Inhomogeneity of collagen organization within the fibrotic scar after myocardial infarction: results in a swine model and in human samples  
*A. Hervas, A. Ruiz-Sauri, E. de Dios, M.J. Forteza, G. Minana, J. Nunez, C. Gomez, C. Bonanad, N. Perez-Sole, J. Gavara, F.J. Chorro and V. Bodi*
- 59 Histopathological analysis of the olfactory epithelium of zebrafish (*Danio rerio*) exposed to sublethal doses of urea  
*S. Bettini, M. Lazzari, S. Ferrando, L. Gallus and V. Franceschini*
- 70 Validity and sensitivity of a human cranial finite element model: implications for comparative studies of biting performance  
*V. Toro-Ibacache, L.C. Fitton, M.J. Fagan and P. O'Higgins*
- 85 Proximate determinants of bite force in *Anolis* lizards  
*A. Wittorski, J.B. Losos and A. Herrel*
- 96 Genetics of murine craniofacial morphology: diallel analysis of the eight founders of the Collaborative Cross  
*C.J. Percival, D.K. Liberton, F. Pardo-manuel De Villena, R. Spritz, R. Marcucio and B. Hallgrímsson*
- 113 Structure and function of the septum nasi and the underlying tension chord in crocodylians  
*S. Klenner, U. Witzel, F. Paris and C. Distler*
- 125 Extensively remodeled, fractured cetacean tympanic bullae show that whales can survive traumatic injury to the ears  
*M. Yamato, K. Khidas, N.D. Pyenson, R.E. Fordyce and J.G. Mead*
- 137 The ear region of earliest known elephant relatives: new light on the ancestral morphotype of proboscideans and afrotherians  
*A. Schmitt and E. Gheerbrant*
- 153 Expression of amelogenin and effects of cyclosporin A in developing hair follicles in rats  
*H.-I. Yoo, G.-H. Lee, S.-Y. Lee, J.-H. Kang, J.-S. Moon, M.-S. Kim and S.-H. Kim*
- 162 Discontinuities in the endothelium of epiphyseal cartilage canals and relevance to joint disease in foals  
*I.R. Hellings, S. Ekman, K. Hulthenby, N.I. Dolvik and K. Ølstad*
- 176 Fascial bundles of the infraspinatus fascia: anatomy, function, and clinical considerations  
*D. Moccia, A.A. Nackashi, R. Schilling and P.J. Ward*
- 184 Uncovered secret of a Vasseur-Tramond wax model  
*J.F. Pastor, B. Gutiérrez, J.M. Montes and R. Ballestrero*

## Methods

- 190 Methods and theory in bone modeling drift: comparing spatial analyses of primary bone distributions in the human humerus  
*C.M. Maggiano, I.S. Maggiano, V.G. Tiesler, J.R. Chi-Keb and S.D. Stout*
- 203 Quantitative imaging of tissue sections using infrared scanning technology  
*S.L. Eaton, E. Cumyn, D. King, R.A. Kline, S.M. Carpanini, J. Del-Pozo, R. Barron and T.M. Wishart*

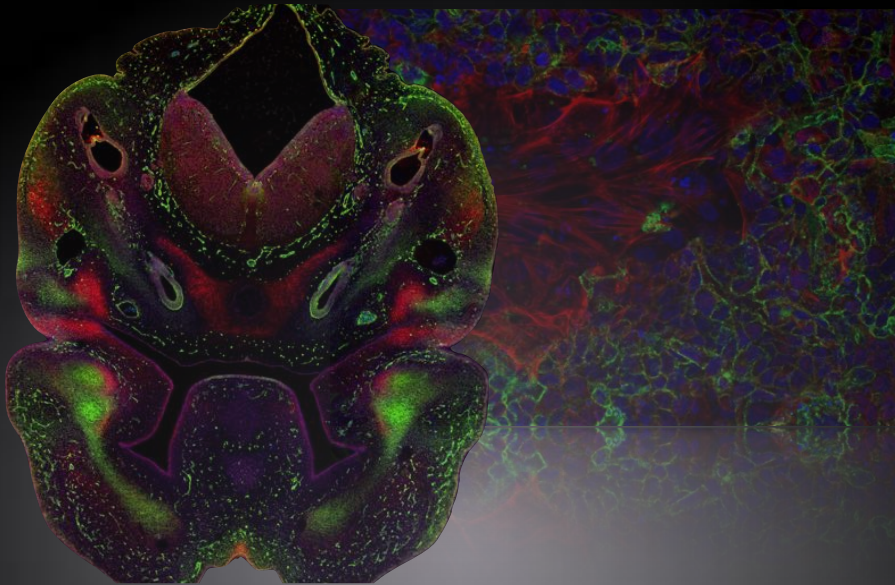
Information on this journal can be accessed at: <http://www.journalofanatomy.com>

Cover image: Surface anatomy of the heart and diaphragm: [www.rcsi.ie/SurfaceAnatomy](http://www.rcsi.ie/SurfaceAnatomy) Morris VB, Corrigan D, Sealy U, Kokaram A, O'Dea M, Lee TC 'Anatomy from the outside in: a new on-line surface anatomy guide'. *J Anat* (2016) 228:1, 24–25.

# ANASTOMOSIS

## Anatomical Society Best Image Prize

Open to Anatomical Society members, entries are adjudicated by the Website Committee and the £200 prize is awarded twice a year. Submit entries at [www.anatsoc.org.uk](http://www.anatsoc.org.uk)



Images should be a single colorful graphical image minimum 75 dpi and a maximum size of 1.0MB for use on Society website/newsletter. Consent from people appearing in any photos is required. A title (no more than 3 words) and short 50-word narrative should accompany the image (for example: what it is; how it was produced; why it is special). An applicant may submit not more than 3 images for any one competition. Applicants submitting images must either own the copyright to the image or have gained the explicit permission of the copyright holder for the image to be submitted for this competition. A copyright statement must accompany each application. Images on this poster: Susan Chapman, Stephane Berneau

# CALL FOR SUBMISSIONS

Next deadline May 31