

Welcome to the February issue of Anastomosis. In this issue, we bring you the latest news from our members and keep you updated on upcoming deadlines. We also highlight some interesting news articles from the past month.

Deadlines

Mark your diary!

The **Summer meeting of the Society** will take place jointly with the British Association of Clinical Anatomists (BACA) at Brighton and Sussex Medical School from **19-21 July 2016**.

Association of Basic Science Teachers in Dentistry (ABSTD) will be holding the 7th European Meeting in Amsterdam, **7th-8th April 2016**. The theme of the meeting is Saliva, Salivary Glands and the Dental Curriculum (whetting the appetite for learning).

Applications are currently open for the **L'Oréal-UNESCO For Women in Science UK & Ireland Fellowships Programme** for 2016. Five outstanding female post-doctoral scientists will each receive fellowships worth £15,000. The fellowships are open to female postdoctoral researchers working in the fields of life and physical sciences, engineering, mathematics and computer sciences. Apply online at www.womeninscience.co.uk by the deadline 11th March 2016.

Research

Journal of Anatomy: invasion by the synovium

The synovial membrane in the temporomandibular joint contain lining cells that appear to be quite adventurous in their ability push vascular boundaries. Kayak Nozawa-Inoue and colleagues at Niigata University in Japan describe their investigation of the immunocytochemical characteristics of synovial lining cells in their paper 'Contribution of synovial lining cells to synovial vascularization of the rat temporomandibular joint' in the current issue of the Journal of Anatomy at <http://onlinelibrary.wiley.com/doi/10.1111/joa.12426/full>

Aging Cell: you are too close to my eye!

Retinal pigment cells are central to retinal health but appear to be quite sensitive to neighborhood proximity. They stop dividing, sink, increase in size, become multinucleate, and refuse to play when the photoreceptor outer segment gets too close. This fascinating children's playground-type scenario is described by Mei Chen and colleagues at Queen's University Belfast, University of Aberdeen, University of Western Australia, and Lions Eye Institute, Australia in their paper 'Retinal pigment epithelial cell multinucleation in the aging eye – a mechanism to repair damage and maintain homeostasis'. You can read more in the current issue of the journal Aging Cell at <http://onlinelibrary.wiley.com/doi/10.1111/ace.12447/full>

Early Call: Anatomical Society Studentships

The Society has announced that it will be seeking applications from Society Members for Anatomical Society Studentships 2016/17 round (student start date 1st October 2017) next year. Application Details will be announced in early 2016.

Graduate Center

Support for Student Societies

The Society provides up to 6 competitive awards to support Student Surgical Societies and Other Student Societies. Applications for maximum funding of £200 are considered on a rolling basis (1 October to 30 September). More details at www.anatsoc.org.uk

Calendar

March

S	M	T	W	T	F	S
		1	2	3	4	5
6	7	8	9	10	11	12
13	14	15	16	17	18	19
20	21	22	23	24	25	26
27	28	29	30	31		

Best Image Prize Deadline May 31, 2016



The next deadline for the Society's Best Image Prize is 31 May 2016. The size limit for submitted images is 1.0MB.

March Table of Contents Journal of Anatomy



The electronic table of contents of the March issue of the Journal of Anatomy is available in this issue of the newsletter.

Royal Society Grants

Brian Mercer Feasibility Award for scientists who wish to commercialise an aspect of their research. No deadline.

Opportunities

Job Vacancies

Applications for **Anatomy Demonstrators** are being invited at the **University of Birmingham - Institute of Clinical Sciences** to teach topographical and functional anatomy of the body, neuroanatomy and histology to undergraduates in Medicine, Dentistry, graduate entry medicine, Biomedical Science Pharmacy, Physiotherapy and other allied health professions. Closing date: **9 March 2016**.

The **National University of Ireland, Galway** are inviting applications for a **Personal Professor / Senior Lecturer in Anatomy** in the School of Medicine. The successful candidate will be required to teach and to develop a research programme within the Discipline of Anatomy in the School of Medicine, and assume responsibility for directing and developing new and innovative teaching initiatives in human anatomy. Closing date: **10 March 2016**.

The **University of Bristol** is accepting applications for up to 5 **Demonstrators in Anatomy** at the **Centre for Comparative and Clinical Anatomy**. Successful candidates are expected to teach human anatomy to medical, dental and science students, and be involved in teaching on external anatomy courses to allied healthcare professional (undergraduate/postgraduate). Closing date: **13 March 2016**.

The **University of Southampton Centre for Learning Anatomical Sciences** have a vacancy for a **Teaching Fellow** to join in developing and providing human anatomy teaching and learning for undergraduates in medicine. Teaching areas include gross anatomy, microanatomy, developmental anatomy and neuroanatomy. Closing date: **13 March 2016**.

Applications are invited for the vacant post of **Lecturer in Clinical Anatomy** at **University of Hull Centre for Anatomical and Human Sciences**. The successful applicant will be expected to contribute to teaching in the Centre, primarily the development, delivery and evaluation of the HYMS Clinical Anatomy MSc programmes, and supporting the development and delivery of modules for the existing undergraduate (MBBS) and postgraduate anatomy programmes. Closing date: **28 March 2016**.



Items should reach the editors a minimum of 30 days before the date that the event is scheduled to take place.



If you have any news, events or announcements that you would like to see published in the newsletter, send us an email

Journal of Anatomy

Volume 228, Issue 3, Pages 355–530, March 2016

Original Articles

- 355 The definitions of three-dimensional landmarks on the human face: an interdisciplinary view
S. Katina, K. McNeil, A. Ayoub, B. Guilfoyle, B. Khambay, P. Siebert, F. Sukno, M. Rojas, L. Vittert, J. Waddington, P.F. Whelan and A.W. Bowman
- 366 Bony labyrinth shape variation in extant Carnivora: a case study of Musteloidea
C. Grohé, Z.J. Tseng, R. Lebrun, R. Boistel and J.J. Flynn
- 384 Quantitative comparison of cerebral artery development in metatherians and monotremes with non-human eutherians
K.W.S. Ashwell and B. Shulruf
- 396 The better to eat you with: the comparative feeding morphology of phocid seals (Pinnipedia, Phocidae)
S.S. Kienle and A. Berta
- 414 Morphology and function of the palatal dentition in Choristodera
R. Matsumoto and S.E. Evans
- 430 Odorous secretions in anurans: morphological and functional assessment of serous glands as a source of volatile compounds in the skin of the treefrog *Hypsiboas pulchellus* (Amphibia: Anura: Hylidae)
A.E. Brunetti, G.N. Hermida, M.G. Iurman and J. Faivovich
- 443 Selective loss of alpha motor neurons with sparing of gamma motor neurons and spinal cord cholinergic neurons in a mouse model of spinal muscular atrophy
R.A. Powis and T.H. Gillingwater
- 452 Distinct expression patterns for type II topoisomerases IIA and IIB in the early foetal human telencephalon
L.F. Harkin, D. Gerrelli, D.C. Gold Diaz, C. Santos, A. Alzu'bi, C.A. Austin and G.J. Clowry
- 464 Mapping cellular processes in the mesenchyme during palatal development in the absence of Tbx1 reveals complex proliferation changes and perturbed cell packing and polarity
L.J. Brock, A.D. Economou, M.T. Cobourne and J.B.A. Green
- 474 Progenitor cell niches in the human pancreatic duct system and associated pancreatic duct glands: an anatomical and immunophenotyping study
G. Carpino, A. Renzi, V. Cardinale, A. Franchitto, P. Onori, D. Overi, M. Rossi, P.B. Berloco, D. Alvaro, L.M. Reid and E. Gaudio
- 487 Unique expression of cytoskeletal proteins in human soft palate muscles
F. Shah, D. Berggren, T. Holmlund, E. Levring Jäghagen and P. Stål
- 495 Infrahepatic inferior caval and azygos vein formation in mammals with different degrees of mesonephric development
J.P.M. Hikspoors, H.K. Mekonen, G.M.C. Mommen, P. Cornillie, S.E. Köhler and W.H. Lamers
- 511 Morphological analysis of the urethral muscle of the male pig with relevance to urinary continence and micturition
L. Ragonieri, F. Ravanetti, F. Gazza, M. Botti, A. Ivanovska and A. Cacchioli
- 520 Contribution of synovial lining cells to synovial vascularization of the rat temporomandibular joint
K. Nozawa-Inoue, F. Harada, J. Magara, A. Ohazama and T. Maeda

Information on this journal can be accessed at: <http://www.journalofanatomy.com>

Cover illustration taken from T. Gillingwater and R. Powis, 'Selective loss of alpha motor neurons with sparing of gamma motor neurons and spinal cord cholinergic neurons in a mouse model of spinal muscular atrophy. (2016) 228:3, 443–451

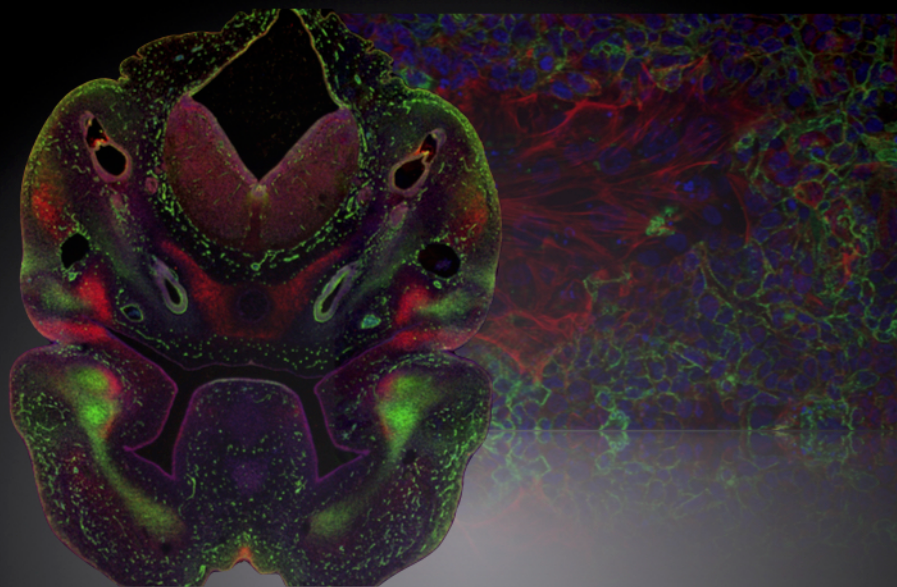
WILEY
Blackwell

Discover this journal online at
Wiley Online Library
wileyonlinelibrary.com

ANASTOMOSIS

Anatomical Society Best Image Prize

Open to Anatomical Society members, entries are adjudicated by the Website Committee and the £200 prize is awarded twice a year. Submit entries at www.anatsoc.org.uk



Images should be a single colorful graphical image minimum 75 dpi and a maximum size of 1.0MB for use on Society website/newsletter. Consent from people appearing in any photos is required. A title (no more than 3 words) and short 50-word narrative should accompany the image (for example: what it is; how it was produced; why it is special). An applicant may submit not more than 3 images for any one competition. Applicants submitting images must either own the copyright to the image or have gained the explicit permission of the copyright holder for the image to be submitted for this competition. A copyright statement must accompany each application. Images on this poster: Susan Chapman, Stephane Berneau

CALL FOR SUBMISSIONS

Next deadline May 31